



CleanRide UV-C™

Date of Issue :
03/2021



Team Eagle Ltd.
10 Trent Drive,
PO Box 670
Campbellford, Ontario
K0L 1L0

P : 1-866-241-3264 CAN
1-855-835-7171 US
E: cleanride@team-eagle.ca

EPA Est. No. 99582-CAN-1

USER MANUAL



CLEAN RIDE UV-C™

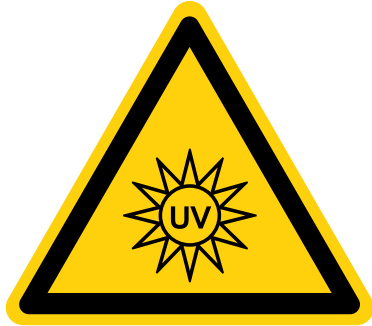


Precautions for UV-C Light: Never have persons present in the vehicle while the light is operating.

CONTENT

01	Safety Precautions	4
02	Technical Data	5
03	Mounting & Operating Instructions	6
04	Removing & Storage	8
05	Maintenance & Troubleshooting	9
06	Warranty, Servicing & Compliance	10
07	Best Use Practices	12
08	Parts Breakdown	13

Safety Precautions.



WARNING: UV-C light is extremely hazardous. Do not allow UV-C light to contact exposed skin. Do not look directly at the UV-C light unless protected by UV-C protective eye-wear.

HEAT WARNING
Lights may be hot.
Please remove with handle.

CAUTION: UV-C LEDs do not emit highly visible light. When the fixture is operating, red warning lights will provide a visual confirmation the unit is running.

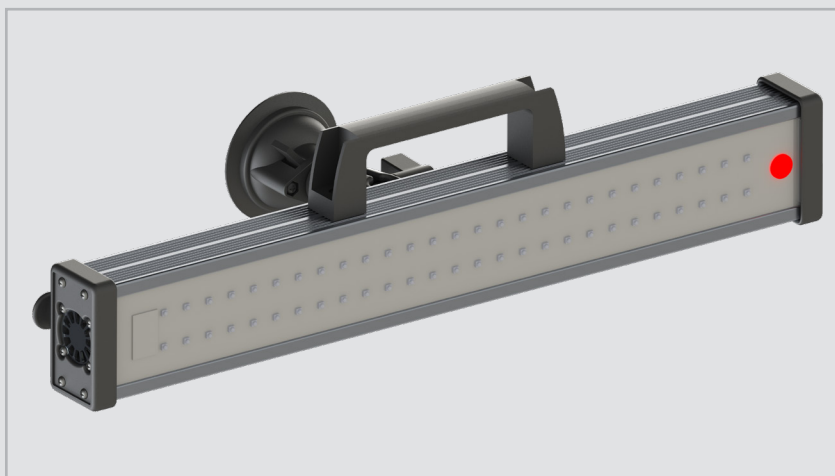
CAUTION: UV-C light will only decontaminate areas the light is able to reach. Shadows and obstructions will diminish or eliminate the decontamination ability of the light. It is up to each user to determine their decontamination needs. Recommended decontamination times for different cab sizes can be found on the back of the unit and on page 6.

CAUTION: Never enter a vehicle while the UV-C is on. Ensure the unit is off prior to opening any doors or windows.

Failure to follow these precautions could result in serious injury.

Technical Data.

Item	Technical Details
Light	UV-C Wavelength = 275nm Voltage = 12-24V DC Dimensions = L 55cm, W 5cm, H 8cm Input and output cables -40°C to 40 °C operating range
RAM Mount	RAM Twist-Lock™ suction cup High strength composites 3.3" diameter 0.73lbs













Each CleanRide UV-C™ unit is equipped with a handle, RAM Mount suction cup with angling capabilities, power cord and on/off switch on an extended cable.

Installation & Mounting.

Installing – When operator is leaving the vehicle.

- Vehicle must be running outside or a certified ventilated area and all vehicle windows/doors must be closed.
- Ensure the window surface is clean of liquid/moisture and debris prior to attaching the RAM suction cup.
- Ensure the RAM Mount suction cup's back toggle switch is in the "OFF" position.
- Firmly press the RAM Mount suction cup against the clean window and switch the toggle switch to the ON position – this does not turn the unit on, it increases the strength of the suction cup.
- Plug the CleanRide UV-C™ into the 12V plug inside the vehicle.
- Take ON/OFF remote and run it over the top of the door and close the door.
- Stick ON/OFF remote to window, near door handle, or other easily accessible area for the next operator to turn off.

CleanRide UV-C™ unit will not clean any surfaces that are not in line of sight (i.e. shadow areas). **See page 13 for best practices.**

 <p>CAUTION UV LIGHT IS HAZARDOUS</p> <p>Exposure can be harmful to humans. Do not expose skin or eyes to the UV Light.</p>	<p>HEAT WARNING Lights may be hot. Use handle.</p> <p>SARS-Cov-2 Vehicle Size Recommended Time:</p> <table border="0"> <tr> <td>Single Operator Cabin: 3 min</td> <td></td> </tr> <tr> <td>Passenger Vehicle: 4 min</td> <td></td> </tr> <tr> <td>Oversized Cabin: 6 min</td> <td></td> </tr> </table> <p><small>For additional uses, please review recommended times for specific disinfecting applications.</small></p>	Single Operator Cabin: 3 min		Passenger Vehicle: 4 min		Oversized Cabin: 6 min	
Single Operator Cabin: 3 min							
Passenger Vehicle: 4 min							
Oversized Cabin: 6 min							

Kills 99.9% of SARS-CoV-2.

Operating.



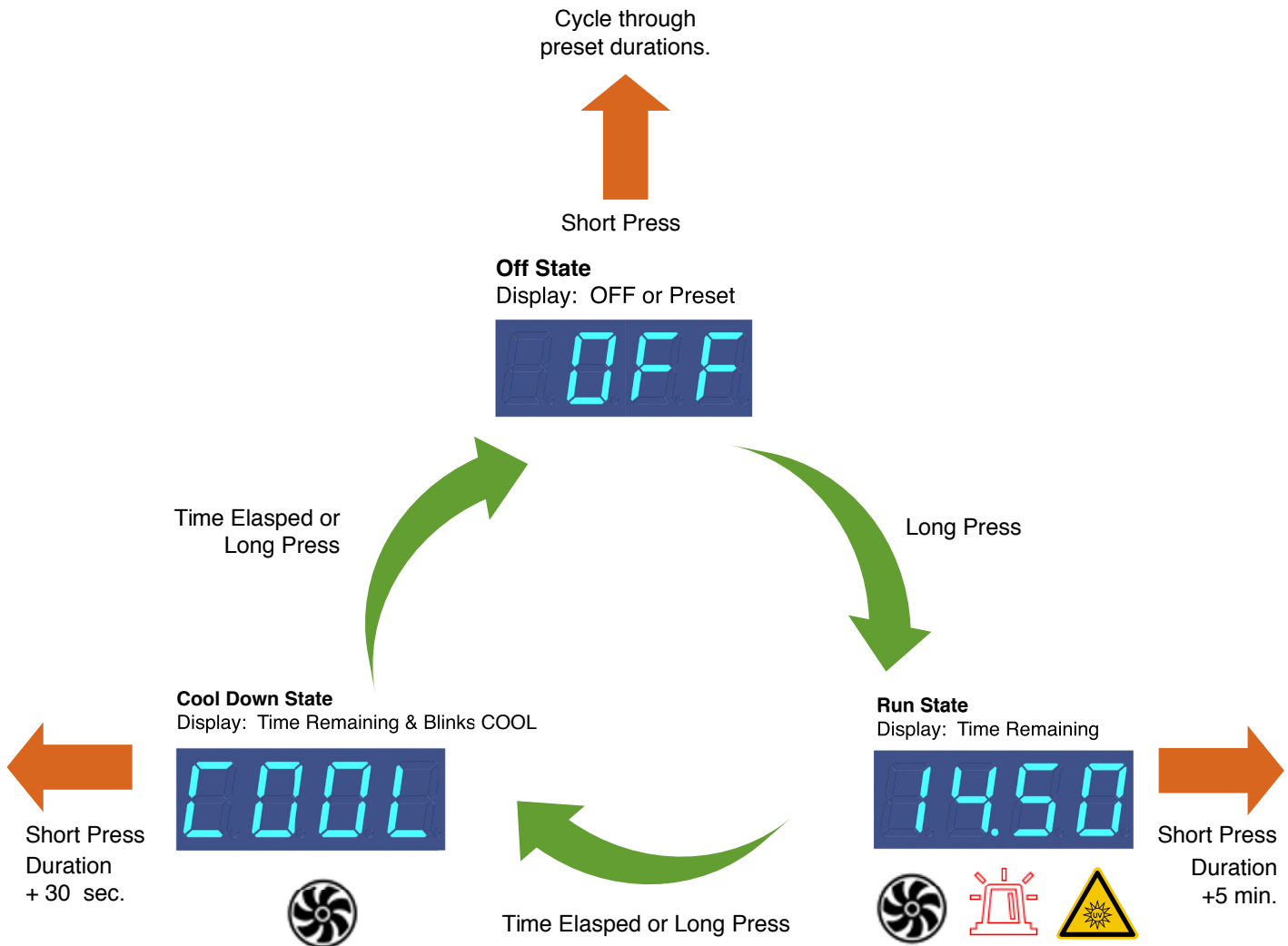
WARNING: NEVER TURN THE UNIT ON IF ANY DOORS AND/OR WINDOWS ARE OPEN.

Remote button distinguishes between a Short Press (< 0.75 sec) and Long Press (>0.75 sec).

Text Instructions:

- Short press + repeat to select time
- Long press to start timer
- Short press while unit is running adds 5 minutes
- Long press to move to cooling cycle
- Short press adds 30 seconds to cooling cycle

Operational Schematic:



When Removing.

- Approach window and confirm on timer the unit has run for the appropriate amount of time for the cab which it is operating in. (NOTE: If flashing “OFF” appears on timer, the unit has run longer than recommended and has completed its cycle and has simply turned off for safety issues).
- If cycle is complete, ensure the screen on the back of the unit is displaying “OFF” and the red lights are not on.
- Enter vehicle, unplug unit from 12V plug
- Wipe down all areas that the UV-C light could not reach with approved sterilization cleaner.
- Wipe down case of CleanRide UV-C™, including black toggle on RAM mount.
- Flip RAM Mount to “OFF” and pull tab on suction cup to remove unit from window using the handle (**note, the unit may be hot when removing**).
- Store in approved storage area.

Storage.

A designated storage area should be implemented for all CleanRide UV-C™ units that is inside to protect from extreme temperatures, dust, debris, damage, and be only accessible by authorized users.

Storage area should be dry, storing the CleanRide UV-C™ in damp conditions may cause damage and/or reduce the lifespan of the unit.

Storage temperature can be from -40°C to 65°C.

Ensure that if cords are being wrapped around the unit, they are not being too sharply bent or twisted near the ends.

Do not store units face down on the LED lights.

Do not place any objects directly on or against the LED lights. This can lead to damage.

Maintenance.

Before performing any maintenance or cleaning, always ensure the CleanRide UV-C™ unit is disconnected from power sources.

The CleanRide UV-C™ unit is not water resistant and should never be sprayed with water. Clean the unit with a soft cloth and a non-abrasive cleaner or disinfectant. Where possible, avoid touching the UV LED chips and circuit board.

In order to maximize the service lifetime, keep the fixtures clean and dry.

Troubleshooting.

LED Lights or warning light not turning on.

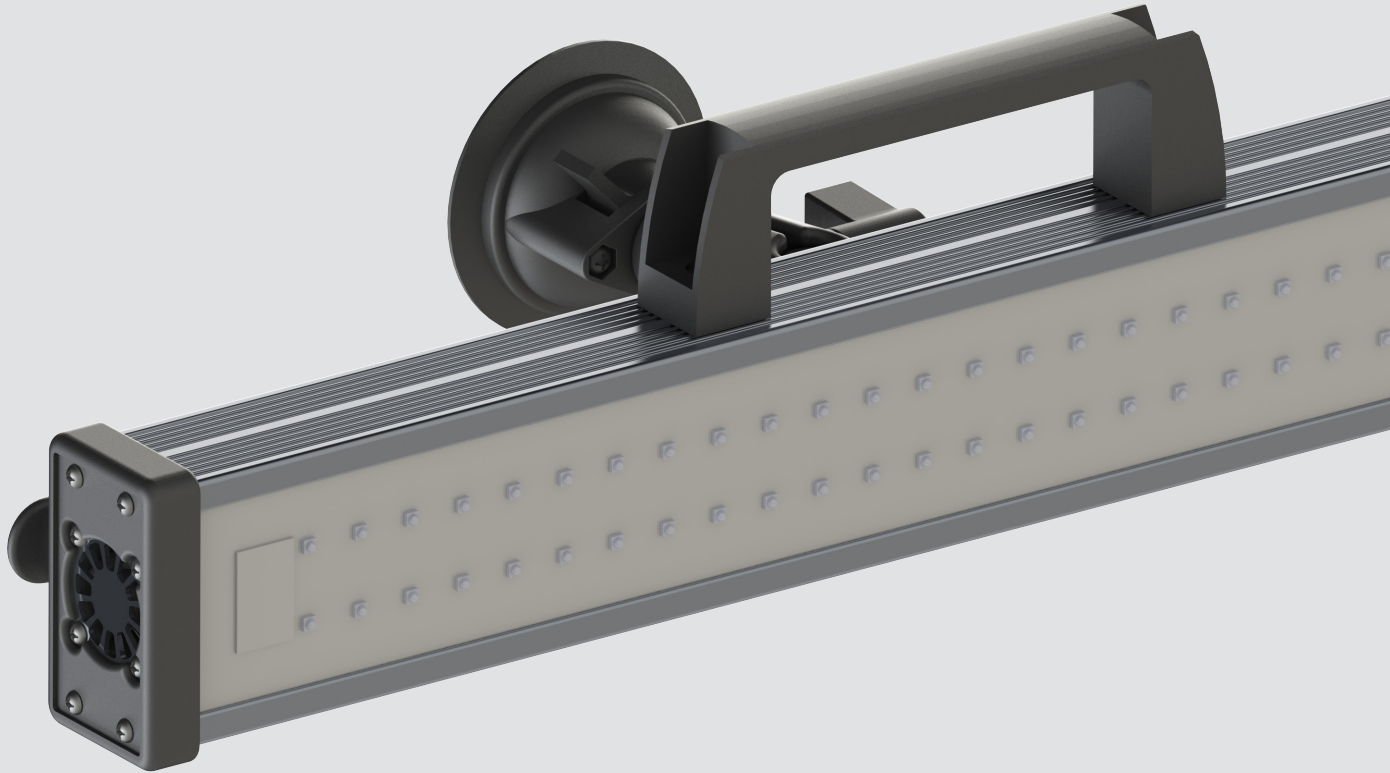
- Ensure the unit is properly plugged into the vehicle outlet and the outlet is receiving power.
- Disconnect from power and check for damage on the wires of the unit.

RAM Mount not sticking to unit.

- Ensure the glass window is clean from debris, dust and liquids (condensation from A/C and heater on windows may cause issue.)
- Clean with an absorbent cloth prior to installing.
- Check RAM Mount to ensure it is in the “OFF” position when applying to glass.
- Inspect RAM Mount suction cup to ensure there are no cracks.



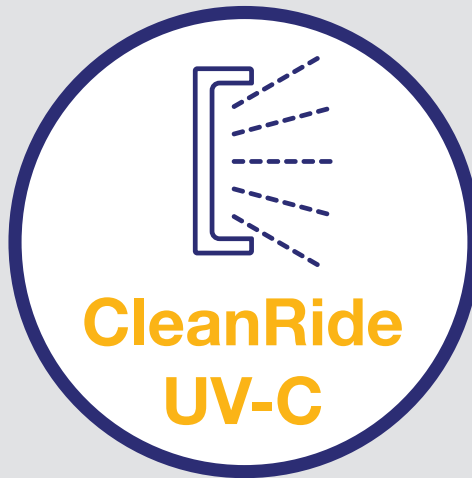
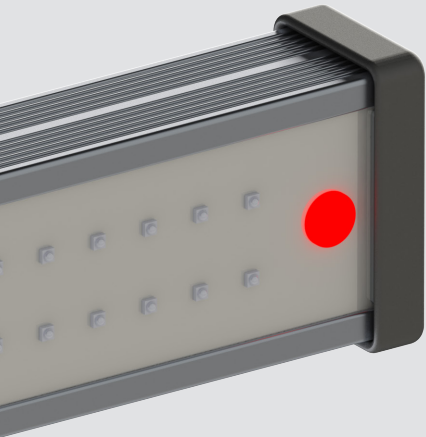
Warranty & Servicing.



Warranty – The CleanRide UV-C™ unit is covered by Team Eagle’s limited one-year warranty.

Servicing - All servicing of the CleanRide UV-C™ unit should be undertaken by Team Eagle or an authorized repair technician. Please contact Team Eagle for assistance should your unit require repair.

Compliance.



Compliance Information
Clean-Ride CR-UVC-000
John Desrochers
Team Eagle Inc.
141 Sanborn Road
Tilton, New Hampshire
03276
1-603-729-0270

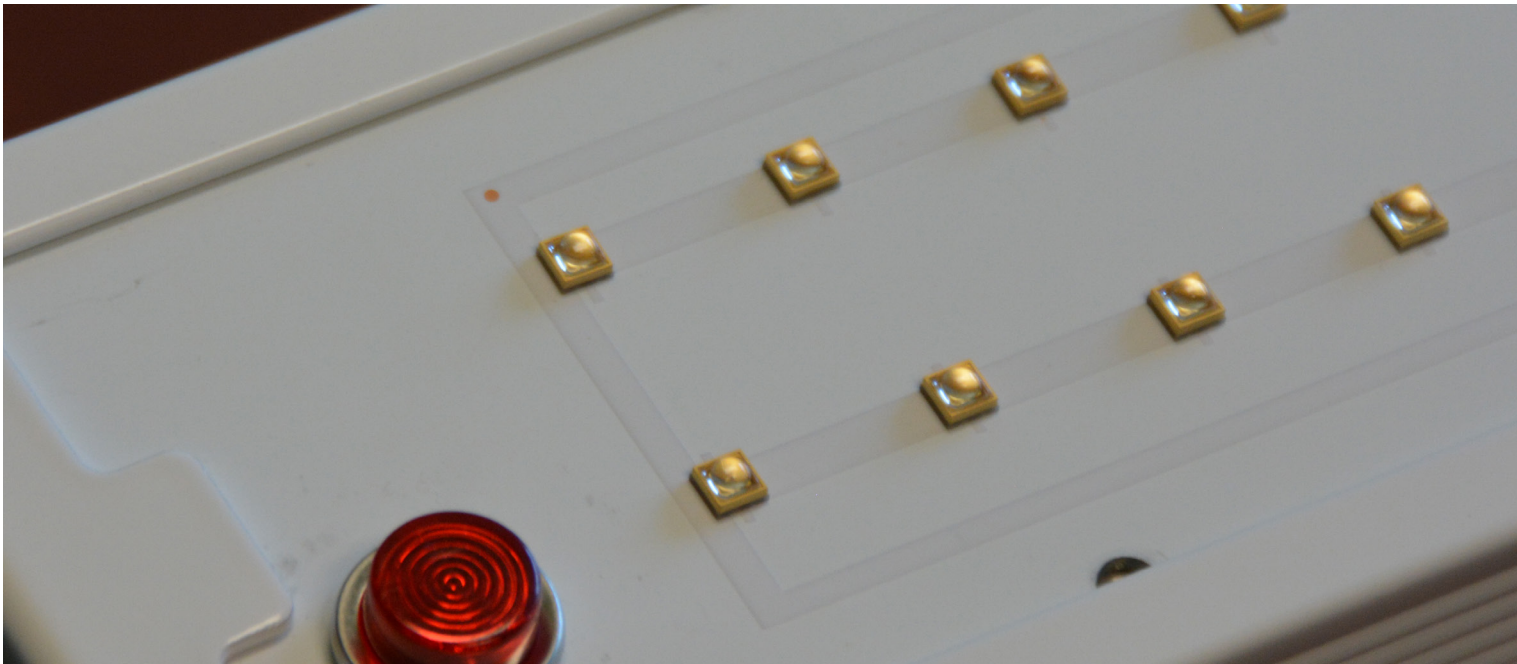
This device complies with Part 15 Subpart B of the FCC Rules. Operation is subject to the following two conditions: (1) This device may not cause harmful interference, and (2) this device must accept any interference received, including interference that may cause undesired operation.

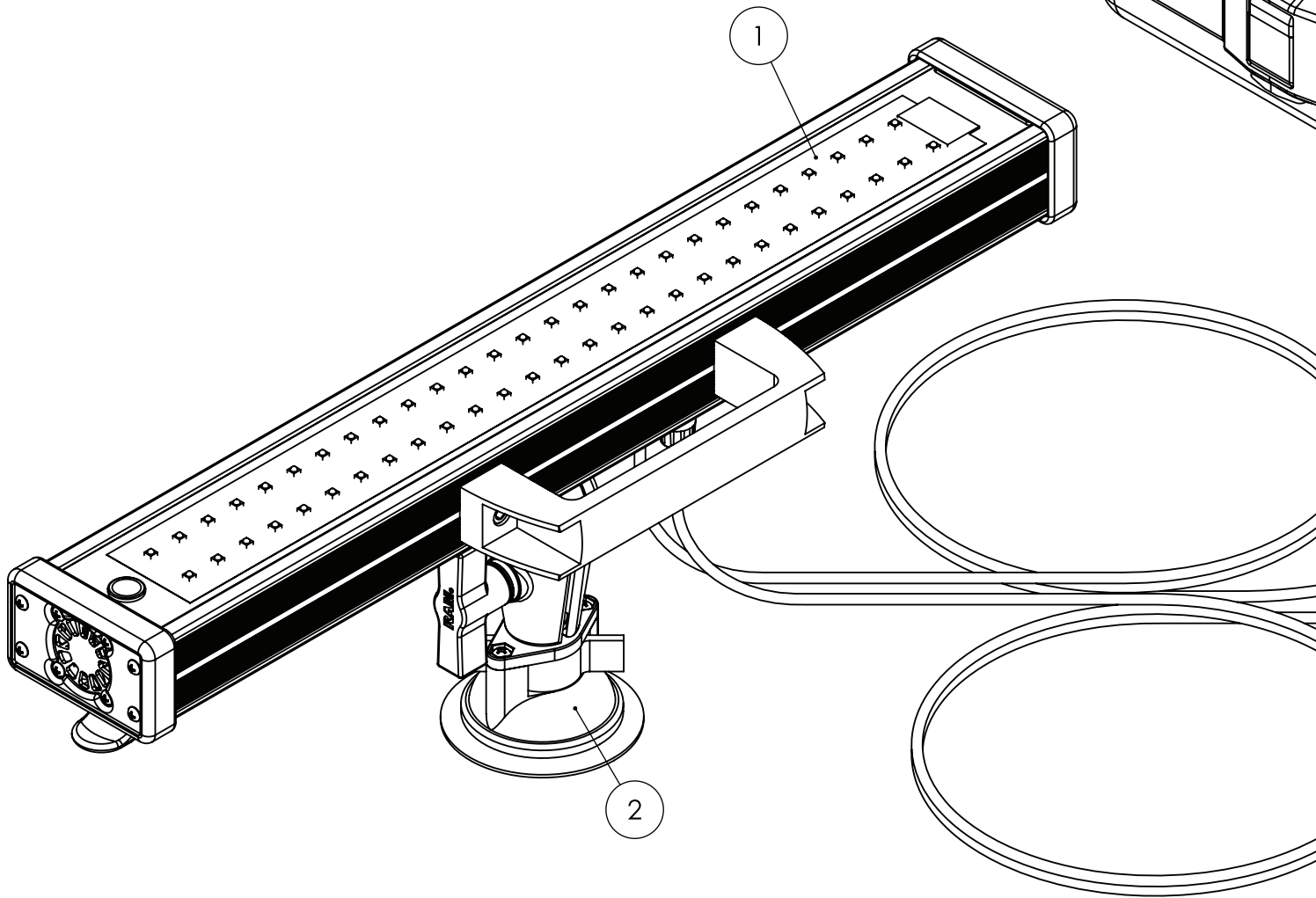
CleanRide UV-C™ kills 99.9% of SARS-CoV-2.

Best Use Practices.

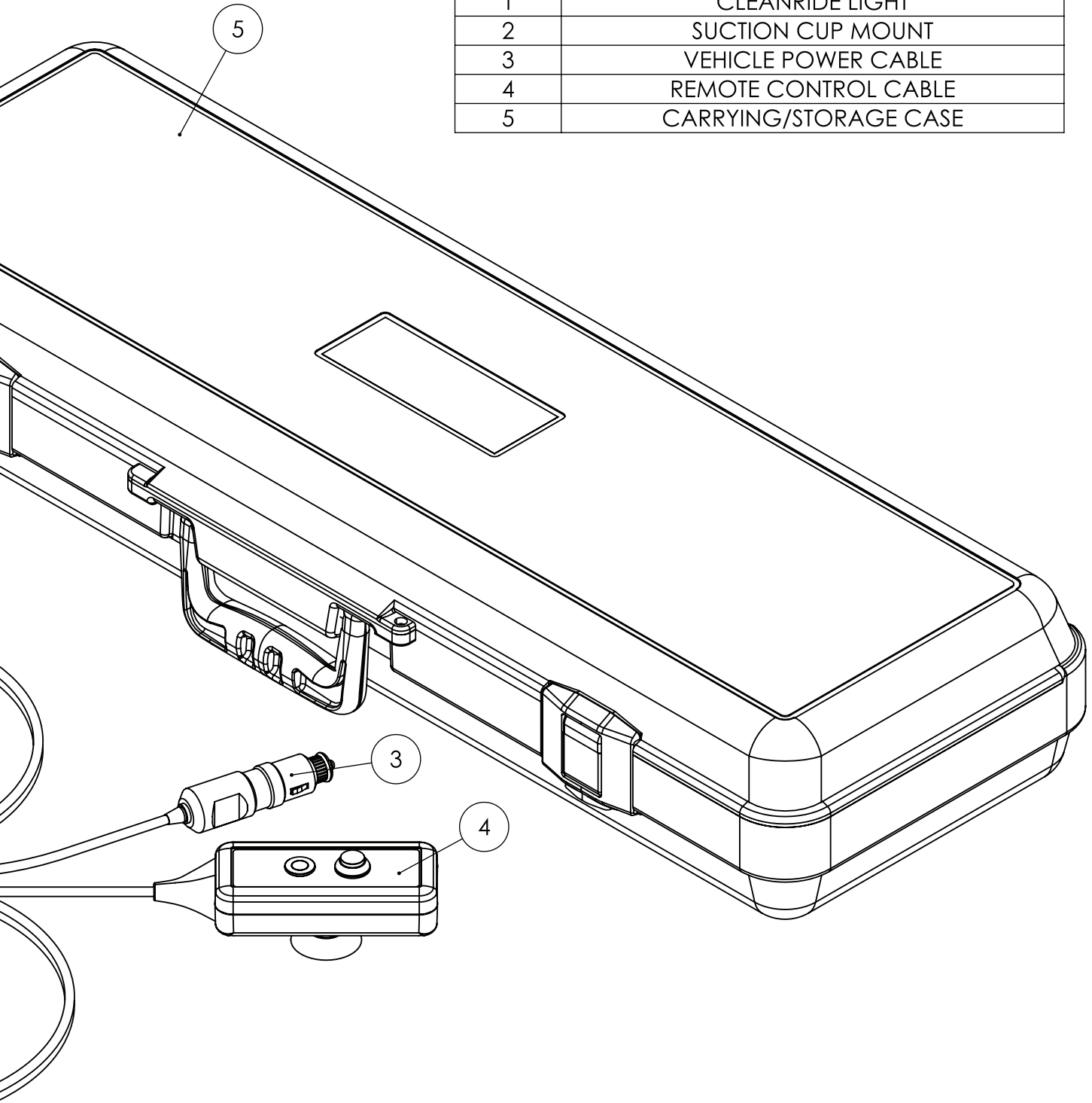
1. Operators of CleanRide UV-C™ must wear PPE (gloves & mask to protect against possible viruses in the vehicle).
2. Handling CleanRide UV-C™, always disinfect the case, handle and touch surfaces of the light prior to contact. Wearing gloves is highly recommended when handling the unit.
3. Use the handle for ease and safety when removing as the unit may be hot.
4. Ensure that all vehicle windows are up.
5. Lock all doors except the door the CleanRide UV-C™ is mounted to.
6. Turn on vehicle HVAC to maximum fan level with low heat or cooling. (do not have climate set to maximum heat).
7. Mount CleanRide UV-C™ control outside the cab as close to the door handle as possible.
8. When complete, turn off CleanRide UV-C™, remove it from vehicle and place it in case.
9. Clean the CleanRide UV-C™ unit and case, place back in designated area.

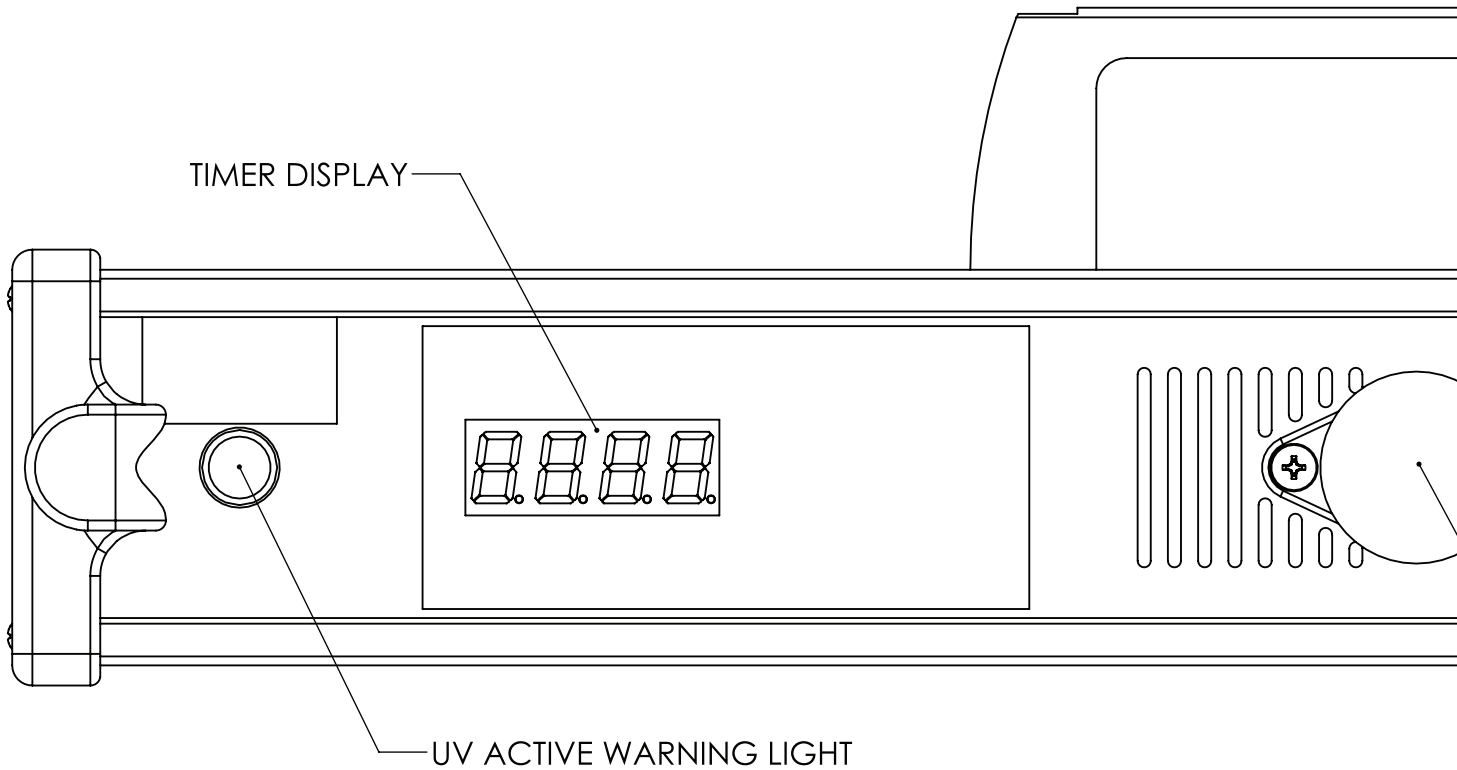
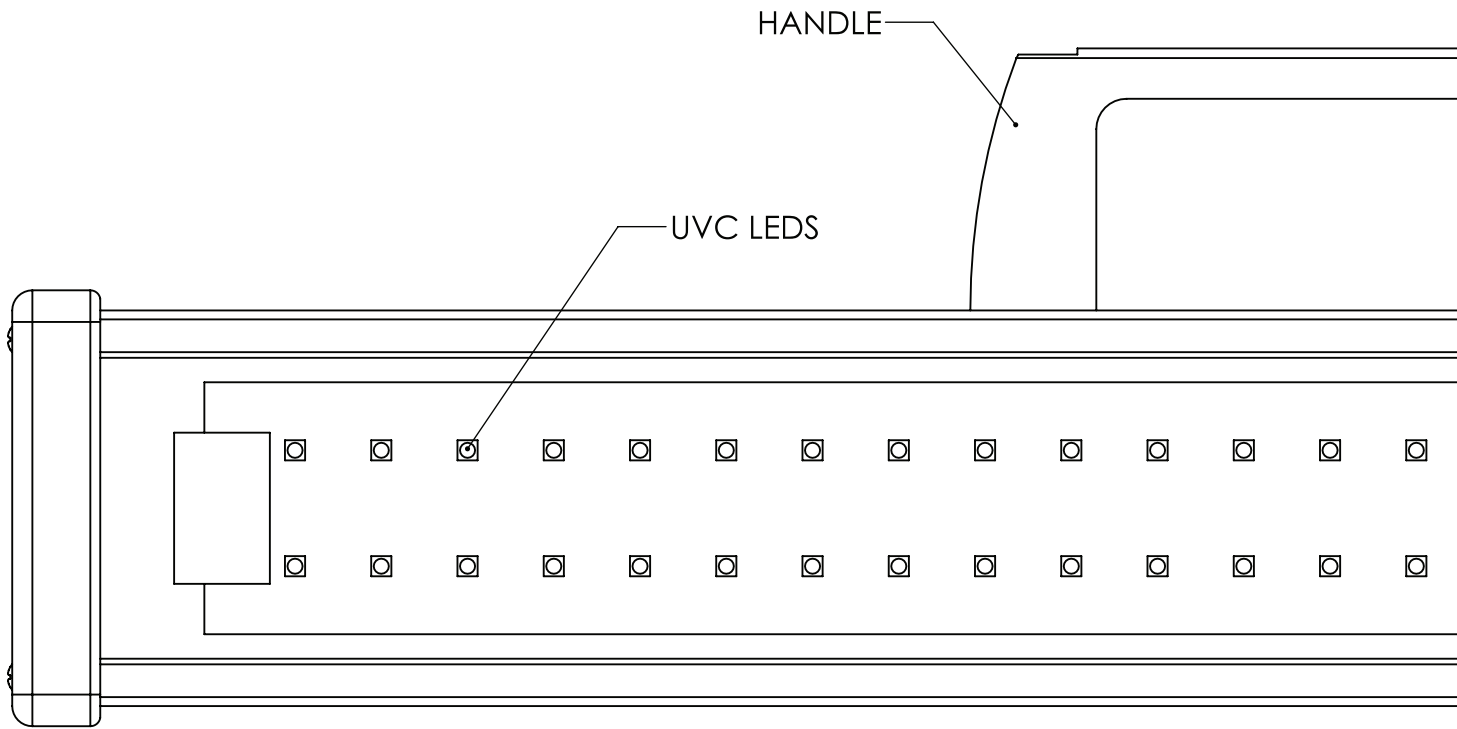
Parts Breakdown.

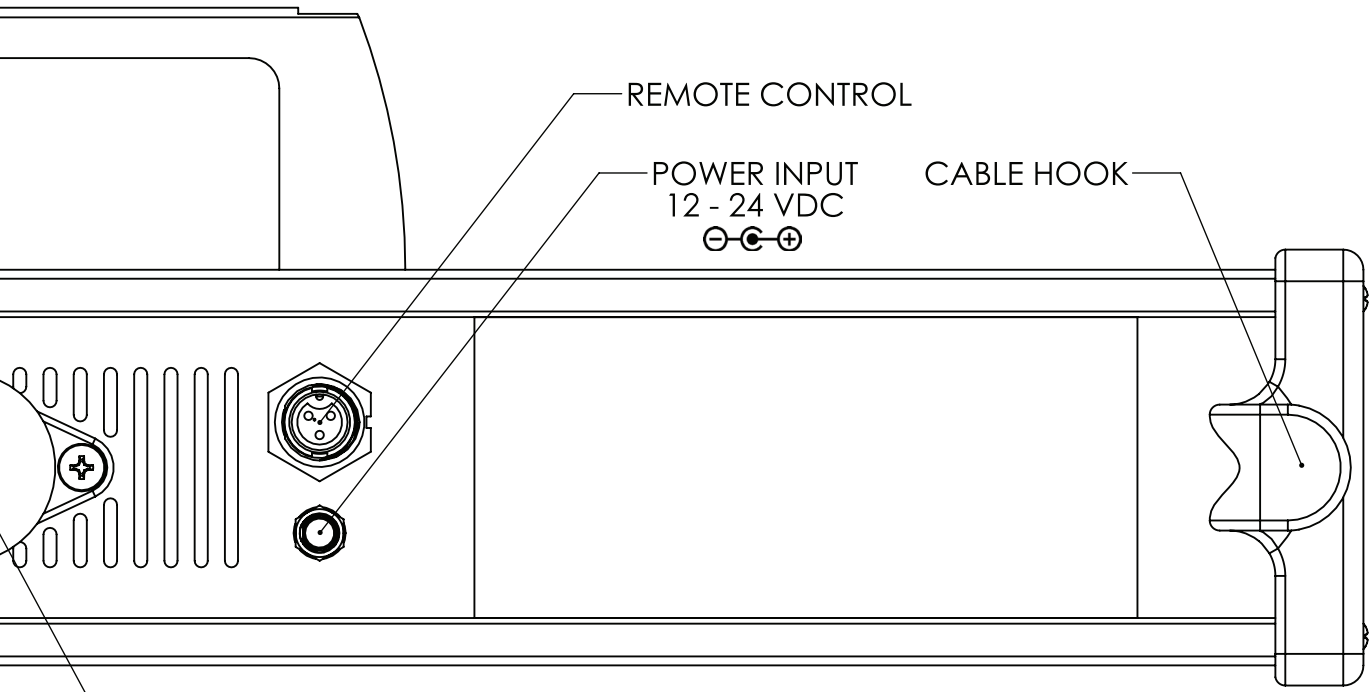
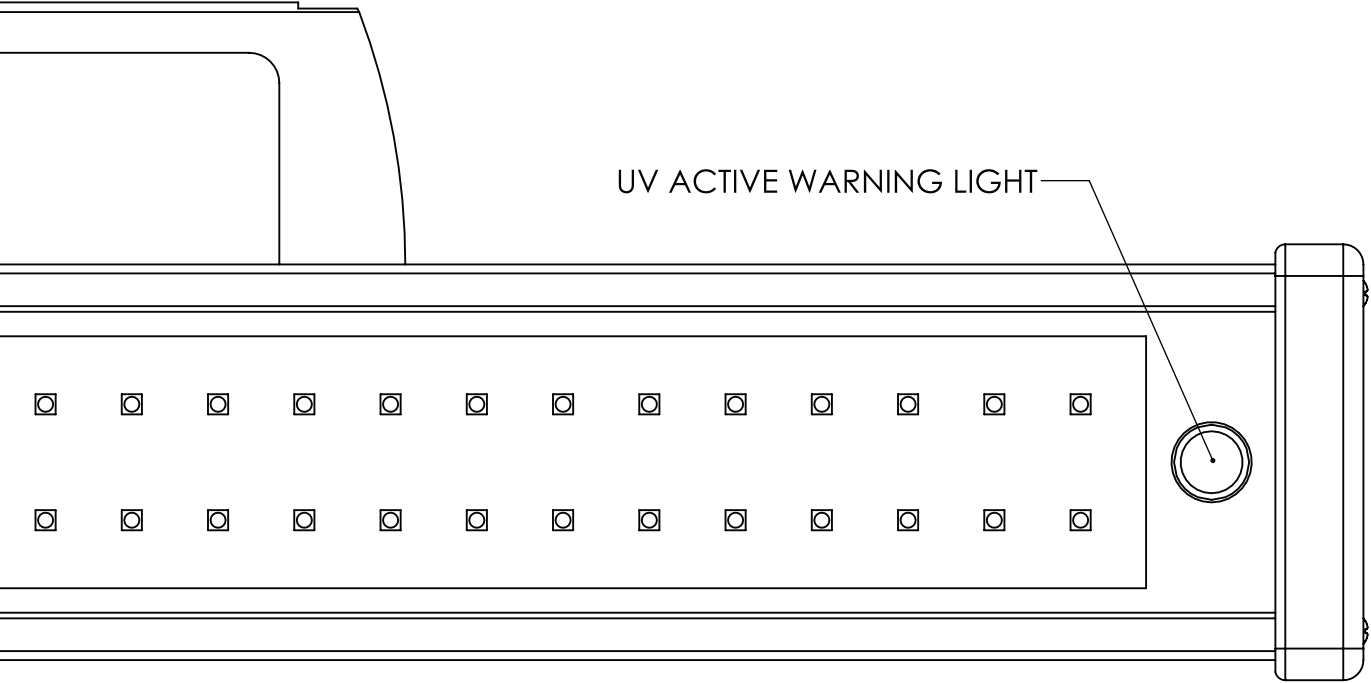


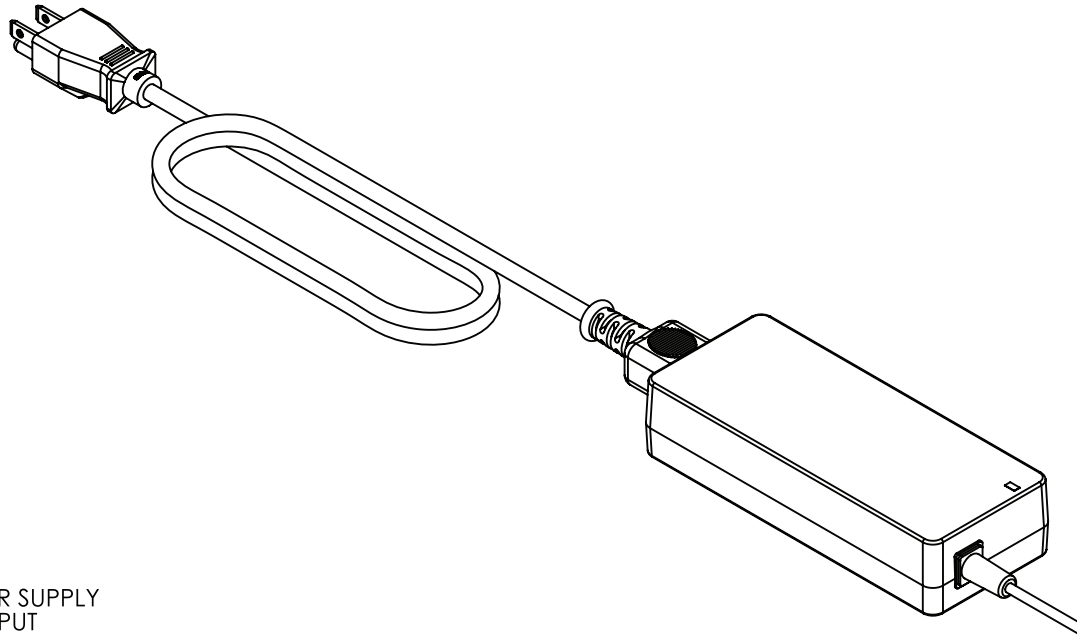


ITEM	DESCRIPTION
1	CLEANRIDE LIGHT
2	SUCTION CUP MOUNT
3	VEHICLE POWER CABLE
4	REMOTE CONTROL CABLE
5	CARRYING/STORAGE CASE

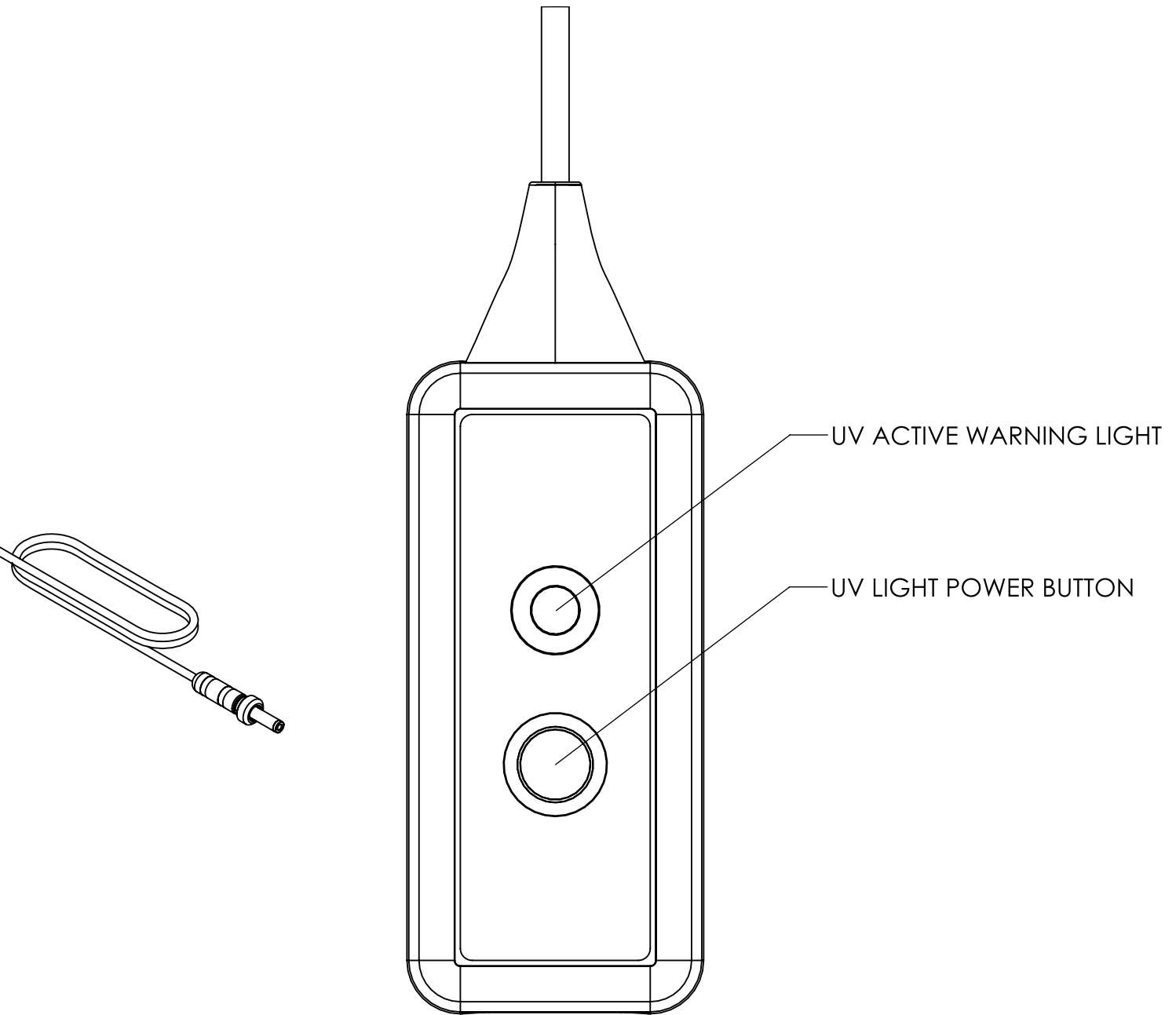








OPTIONAL AC POWER SUPPLY
90 - 264 VAC INPUT
REGION SPECIFIC PLUGS AVAILABLE





Thank You.